



## DAKAR DAKAR400

- Ⓔ **ES** MANUAL DE INSTRUCCIONES ORIGINAL
- Ⓔ **GB** ORIGINAL USER GUIDE
- Ⓔ **FR** MANUEL ORIGINAL D'UTILISATION

C/ Albuñol, par.250  
Pol. Ind. Juncaril,  
18220 ALBOLOTE (Granada) ESPAÑA  
Telf: (+34)958 490 410  
Fax: (+34) 958 466 645  
info@simasa.com  
www.simasa.com



# "EC" DECLARATION OF CONFORMITY

## SIMA, S.A.

Polígono Industrial Juncaril, C/ Albuñol, Parcela 250 C. P. 18220 Albolote, Granada (SPAIN)  
Company responsible for manufacturing and commercialising the below specified machine:

### MATERIALS TABLE SAW

#### DECLARES:

That the above mentioned machine designed for masonry cutting of stone and other construction materials is in conformity with all applicable provisions of the Directive of Machines (**2006/42/CE**) and the national applicable regulations.

The machine is also in conformity with EC applicable provisions:

**2006/95/CE; 2004/108/CE; 2000/14/CE; 2002/44/CE; 2002/95/CE; 2002/96/CE**

The machine is also in conformity with the provisions of the following applicable norms  
UNE-EN 292-1; UNE-EN 292 -2; UNE-EN 294; UNE-EN 349; UNE-EN 60204-1; UNE-EN 12418;  
UNE-EN 1050 ; UNE-EN 953.

#### Details of the authorized person to elaborate the technical file

Eugenio Fernández Martín  
**Technical Department Manager**

SIMA S.A.

Polígono Industrial Juncaril, C/ Albuñol, Parcela 250 - 18220 Albolote, Granada (SPAIN)

Albolote 01.01.2010



Signed:  
Javier García Marina  
Managing Director

## ÍNDICE

<b>"EC" DECLARATION OF CONFORMITY .....</b>	<b>3</b>
<b>1. GENERAL INFORMATION.....</b>	<b>5</b>
<b>2. GENERAL DESCRIPTION OF THE MACHINE.....</b>	<b>5</b>
2.1 PICTOGRAMAS.....	6
<b>3. TRANSPORTATION .....</b>	<b>6</b>
<b>4. ELECTRICAL PLUGGING AND ADJUSTING THE DISK ROTATION SENSE .....</b>	<b>7</b>
<b>5. ELECTRICAL EQUIPMENT .....</b>	<b>7</b>
<b>6. SECURITY RECOMENDATIONS. ....</b>	<b>8</b>
<b>7. DESCRIPTION .....</b>	<b>10</b>
<b>8. MOUNTING AND DISMOUNTING THE CUTTING DISK .....</b>	<b>11</b>
8.1 MOUNTING/REPLACING THE CUTTING DISK .....	11
<b>9. MACHINE STARTING-UP AND USING INSTRUCTIONS .....</b>	<b>12</b>
9.1 ASSEMBLY INSTRUCIONS .....	12
9.2 FILLING THE TRAY WITH WATER.....	13
9.3 POSITION OF THE MACHINE AND THE OPERATOR, CONNECTION AND DISCONNECTION .....	13
9.4 DJUSTABLE CUTTING RULE .....	14
9.5 CHANGING POSITION FROM 300 TO 350MM OR 350 TO 400MM BLADE .....	14
9.6 CUTTING LENGHT SWITCH.....	15
<b>10. MAINTENANCE .....</b>	<b>15</b>
10.1 SETTING THE ANGLE OF THE BLADE.....	16
10.2 GUIDEWAY ALIGNMENT BLADE .....	17
<b>11. SOLUTIONS TO MOST FREQUENT ANOMALIES .....</b>	<b>18</b>
<b>12. TECNICAL CHARACTERISTICS .....</b>	<b>19</b>
<b>13. WARRANTY .....</b>	<b>20</b>
<b>14. SPARE PARTS.....</b>	<b>20</b>
<b>15. ENVIROMENT PROTECTION.....</b>	<b>20</b>
<b>16. DECLARATION OF NOISES.....</b>	<b>20</b>
<b>17. DECLARATION ON MECHANICAL VIBRATIONS .....</b>	<b>20</b>
<b>18. ELECTRICAL SCHEMES .....</b>	<b>21</b>

## 1. GENERAL INFORMATION

**WARNING: Please read and understand perfectly the present instruction before using the machine.**

SIMA S.A. thanks you for your trust in our products and for purchasing the TABLE SAW DAKAR MEKANO or DAKAR400 MEKANO model

This manual provides you with the necessary instructions to start, use, maintain and in your case, repair of the present machine. All aspects as far as the safety and health of the users is concerned have been stated. Respecting all instructions and recommendations assures safety and low maintenance. As such, reading this manual carefully is compulsory for any person responsible for the use, maintenance or repair of this machine.

As such, reading this manual carefully is compulsory for any person responsible for the use, maintenance or repair of this machine.

**It is recommended to have always this manual in an easily accessible place where the machine is being used.**

## 2. GENERAL DESCRIPTION OF THE MACHINE

SIMA Cutting Table Saws, DAKAR MEKANO or DAKAR400 MEKANO models, are designed and manufactured to be used at masonry building sites, in particular to cut until 20 cm high concrete blocks and other construction materials, mineral and compounds with at least one bearing side (tile, terrazzo, brick, marble, granite, concrete or ceramics shingle, stoneware... The cutting tool is a diamond disk powered by an electric motor and water cooled by a closed-circuit pump. The progress of the disk is done manually by moving the cutting head in the direction of the material to be cut. The DAKAR MEKANO or DAKAR400 MEKANO models are manufactured of high quality materials.

**Any use other than the machine has been designed for is considered inappropriate and can be dangerous; therefore, it is expressly prohibited.**

- DAKAR MEKANO or DAKAR400 MEKANO models are very reliable table saw on work site, capable to performance mitring and 90° cutting.
- Enable to move the head up and down directions easily and manually way, through turning and blocking the head using the handle proportionate for the purpose
- The head of the motor keep the right balance even when the block is cancel due a spring.
- Its steel chassis avoid vibrations during cutting. Therefore we get a better efficiency of the diamond blade.
- The sliding cart is supported by four wheels which roll over two rolling tracks build with a "U" frame. A rubber protection is dispose on the sliding cart in its upper side to avoid the sliding of the material being cut.
- The machine has four demountable legs to facilitate its transport and handles for its displacement.
- It has been furnished with a graduated ruler to cut pieces in angles. It carries out mitre-cuts up to 45°.
- The machine is protected with an anti-splatter screen to avoid the water splashing towards the back part of the machine where the cutting is being performed.
- The frame of the machine is painted with a highly resistant anti-corrosion epoxy polyester paint.
- This machine has been designed and manufactured to cut with a water cooled diamond disk. The cooling is carried out by a closed-circuit electric pump with a constant water flow.
- The electric pump with a high impedance winding avoids its burning in normal conditions of use and certainly that it is always covered with water.
- Bearings electric motors are mounted with a high waterproof grade in order to guarantee long live to its elements.

2.1 PICTOGRAMAS

Pictograms included in the machine entail the following:



- USE SAFETY BOOTS
- USE HELMET AND EYE AND AUDITIVE PROTECTION
- READ INSTRUCTIONS MANUAL
- USE SAFETY GLOVES.
- SOUND POWER LEVEL ISSUED BY THE MACHINE.



Machine connected to 110V.



Machine connected to 230V.



Machine connected to 400V.



Hot surfaces.



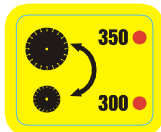
Entry not allowed to persons outside the labor. Warning cutting tool.



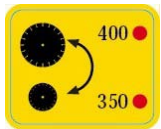
Minimum cutting unit distance DAKAR MEKANO.



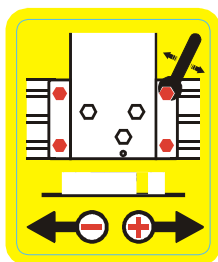
Minimum cutting unit distance DAKAR400 MEKANO.



Height of the cutting unit to 300 and 350 blade.



Height of the cutting unit to 350 and 400 blade.



Cutting length adjustment.

3. TRANSPORTATION

After unpacking the machine, it can be move it into the work place manually by two people.

It is recommended to empty the water from the tray before moving the machine to avoid splashing or spillage. It is also necessary to block the car to avoid unexpected slip during transport. Check also that they are fully tightened the screws holding the legs to the tray to avoid dislodging the raising machine.



#### 4. ELECTRICAL PLUGGING AND ADJUSTING THE DISK ROTATION SENSE

Upon receipt of the machine, make sure the network electrical tension is adequate before plugging the machine. The electrical tension is to be found on the voltage indication next to the switch of the machine.



**WARNING:** Never plug the machine to electricity, in case the network power tension is not the adequate as the engine would undergo irreparable damages.



Once you have realised the previous steps and before placing the disk and manipulate the motor, it is necessary to check and adjust the rotation of the motor axis correctly, you have to plug the machine to the electricity and start it up, watching the rotation direction that must be clockwise.

If necessary and with three-phase motors, you can change the rotation direction swapping the two phase wires in the aerial or in the peg of the feeding extension cord.



**WARNING:** Never manipulate power supply cables or any other electrical equipment on the machine before you unplug the machine from electricity.



**WARNING:** Unplug the machine from the network before proceeding to change the position of the bridge plates on the engines. You should also proceed to change the stickers indicating the supply voltage, so there will always be indicated on the machine rated voltage.



#### 5. ELECTRICAL EQUIPMENT

The electrical equipment of the DAKAR MEKANO or DAKAR400 MEKANO cutting tables manufactured by SIMA, S.A. has an IP54 protection degree. The power supply on this machine has a low minimal tension coil to avoid any unexpected starting-up of the machine. When there is a power cut or a fall of tension that causes the machine to stop,

and once the normal power conditions have been re-established, the motor does not start until the green button is pressed.



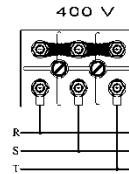
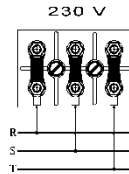
**ATENCIÓN:** The three-phase DAKAR MEKANO or DAKAR400 MEKANO models leave the factory prepared to work at 400V.



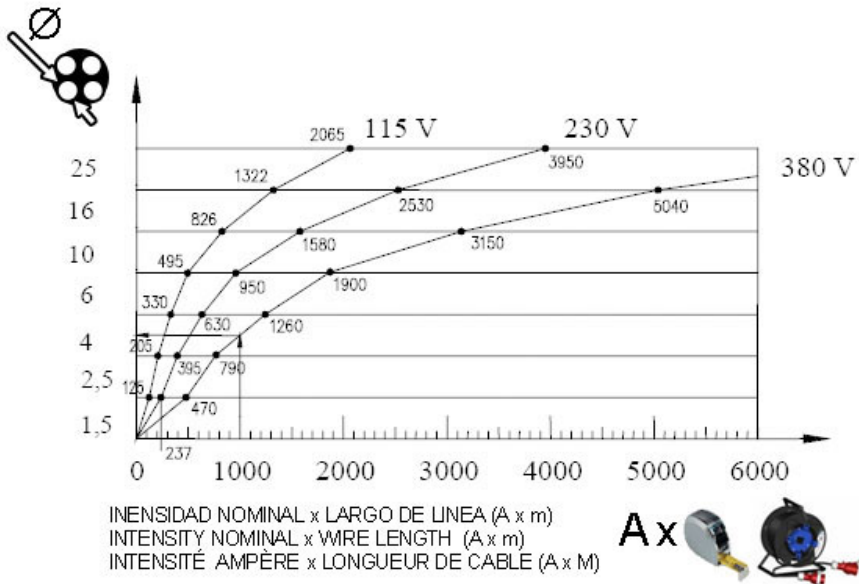
**ATENCIÓN:** When necessary to use a three-phase power tension at 230V, we need to swap the positions of the bridge plates in the motor terminals box, as indicated in the following figure:



**ATENCIÓN:** The extension cable needs to have a minimum section



used to feed the machine on the table as shown below



**6. SECURITY RECOMENDATIONS.**



The machines with electric motor should always be connected to a standard electrical box that has a circuit breaker and a Residual-current device in accordance with the characteristics of the engine ( see table).

2.2kw/3 CV -230V	20A/300mA
3kw/4 CV - 230V	20A/300mA
3kw/4 CV - 400V	15A/300mA



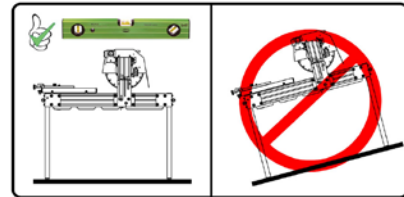


**WARNING:** Always use earth plug before starting-up the machine.

- Use normalised cables
- Make sure the feeding voltage is in accordance with the voltage indicated in the adhesive label on the machine.
- Make sure that the extension cords are not in contact with points of high temperature, oil, water, sharp edges.
- Do not use high pressure water to clean circuits or electrical elements.



- The damaged electrical cables should be urgently replaced.
- Mantengan en su posición los elementos y protecciones de seguridad.
- Always use approved protective items (gloves, helmet, goggles, boots ... ..)
- Turn the machine on the network and do not handle or operate on the mechanical and electrical machine with the engine running.
- Cutting table machines should be used by people who are familiar with its operation.
- It's not allow to access and manipulation of the machine to people who are not familiar with the machine before.
- Work clothes should not include loose clothing that could get caught in moving parts of the machine.
- Before starting the machine, read the instructions carefully and observe compliance with safety standards. Learn well how to stop the machine quickly and safely.
- Place the machine on a flat and well lit and you do not switch the machine on until it's got a balance position.



- Make sure the machine is in perfect technical condition and fully operational.
- Do not operate the machine if all the protections and safeguards are assembled which have been designed for that purpose.
- When moving the machine, always verify that engine and moving parts are blocked.
- Use only diamond blades specified in this manual.



This machine **MUST NOT BE USED IN THE RAIN**. Cover with waterproof materials. If the machine has been exposed in the rain check before connecting the electrical parts are not wet. **Always work with good lighting conditions.**

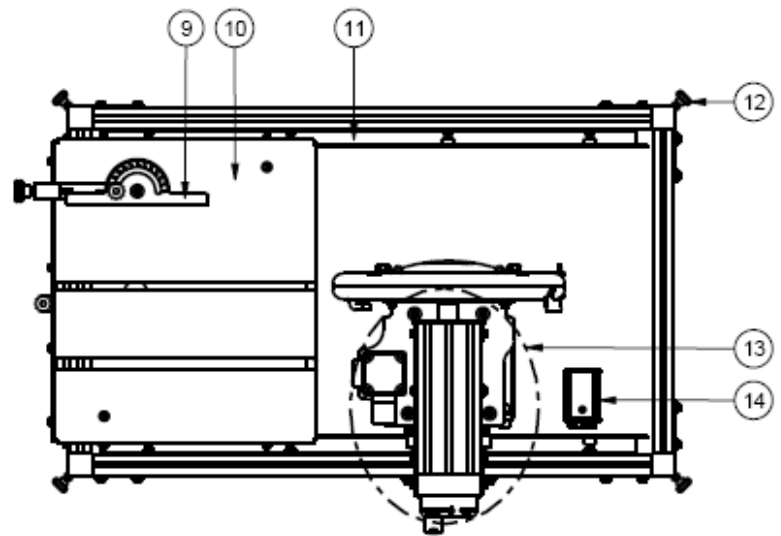
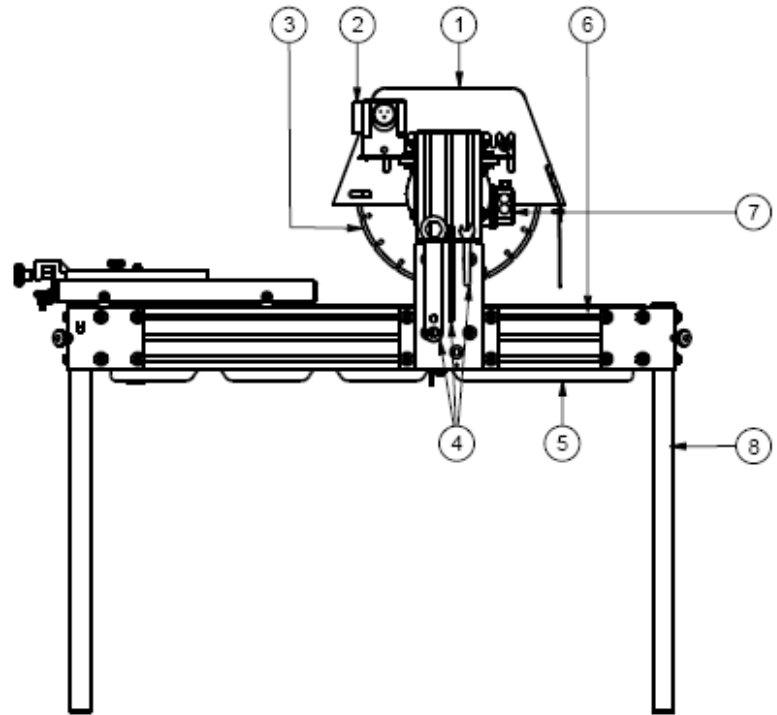


**WARNING:** You must follow all safety recommendations outlined in this manual and comply with regulations for the prevention of occupational hazards of each place

**SIMA, S.A. is not responsible for the consequences possibly generated but the inadequate use of the materials cutting machine DAKAR MEKANO or DAKAR400 MEKANO model.**

## 7. DESCRIPTION

1. Safeguard blade.
2. Switch.
3. Blade.
4. Tools.
5. Tray.
6. Framework.
7. Engine.
8. legs.
9. Graduate rule.
10. Sliding cart.
11. Guideways.
12. Fixing knob feet.
13. Cutting unit.
14. Water pump.



## 8. MOUNTING AND DISMOUNTING THE CUTTING DISK

The DAKAR MEKANO / DAKAR400 MEKANO models are designed to use segmented diamond disks and continuous rim disks either 300 or 350 mm / 350 or 400 mm of diameter

The cutting disks have different properties depending on the material to cut. Hence, an adequate selection of the disk increases the performance and guarantees a better result.

Make sure the maximal supported revolutions by the disk are equal or superior to those of the machine's engine.

The blade is one of the most important elements in a table saw. A blade in good condition is essential to achieve optimal performance of the machine, replace worn or when it is twisted or cracked.

Do not use any other blade other than that specified in this manual and see which has the characteristics required maximum diameter central hole diameter and the maximum speed supported.

Note that within the group of diamond blades are different types depending on the material being cut, always choose the most appropriate for you.

For all the above, we recommend always using SIMA Original blades that meet the technical requirements and safety requirements and are offered in a range that covers all the needs and facilitates the correct choice.

### 8.1 MOUNTING/REPLACING THE CUTTING DISK

The disk can be mounted or replaced as follows:

- Make sure the power supply cable of the machine is disconnected.
- Remove the disk safeguard (**P, Fig. 3**) of the cutting bridge of the machine loosening the screws that fix it. (**A, Fig. 3**)
- Introduce the hexagonal key (**E Fig. 3**) in the nut (**D Fig. 3**) Block the rotation of the axis inserting the pricker key in the bore placed outside (**C, Fig.3**), untighten the axis nut and remove the outer bridle (**F, Fig.3**).

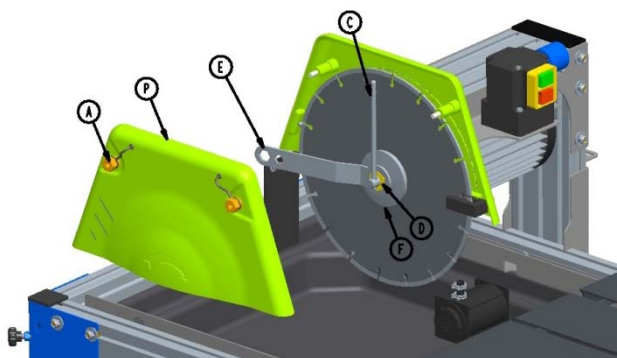
**WARNING:** The nut is left-threaded

- Place the disk on its axis ensuring it is well centralised and perfectly located.
- Place the exterior bridle back and tighten the axis nut using the set of keys used before.
- Check the coupling between the disk and the bridles before tightening the nut.
- Place the safeguard back in its position and tighten well the screws fixing the cutting head.
- To dismount the disk, proceed in the inverse sense.

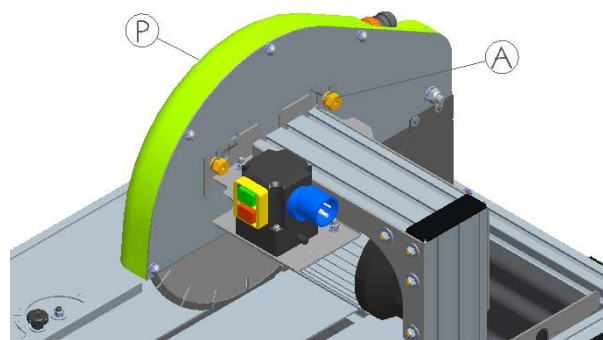


**WARNING:** Remove all the used tools, making sure that all the elements of the machines have been mounted in the correct position.

- You can plug the machine to the mains.



DAKAR MEKANO



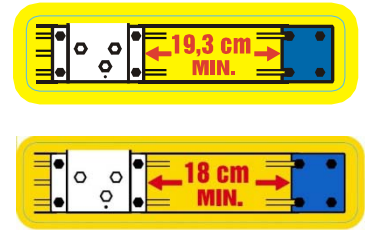
DAKAR400 MEKANO

## 9. MACHINE STARTING-UP AND USING INSTRUCTIONS

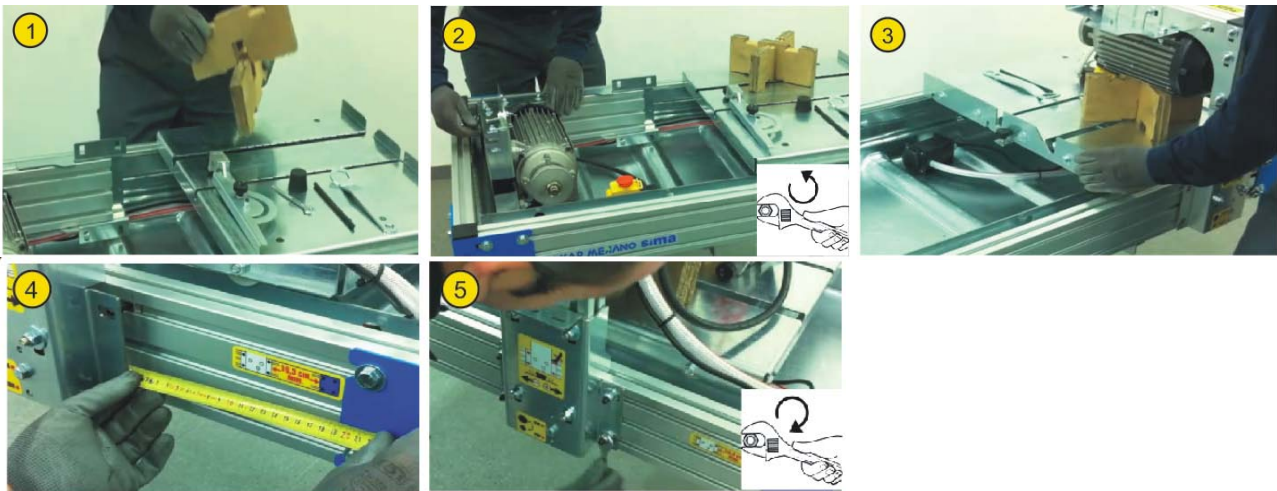
### 9.1 ASSEMBLY INSTRUCTIONS

When you unpack the machine you will need to assemble the following components:

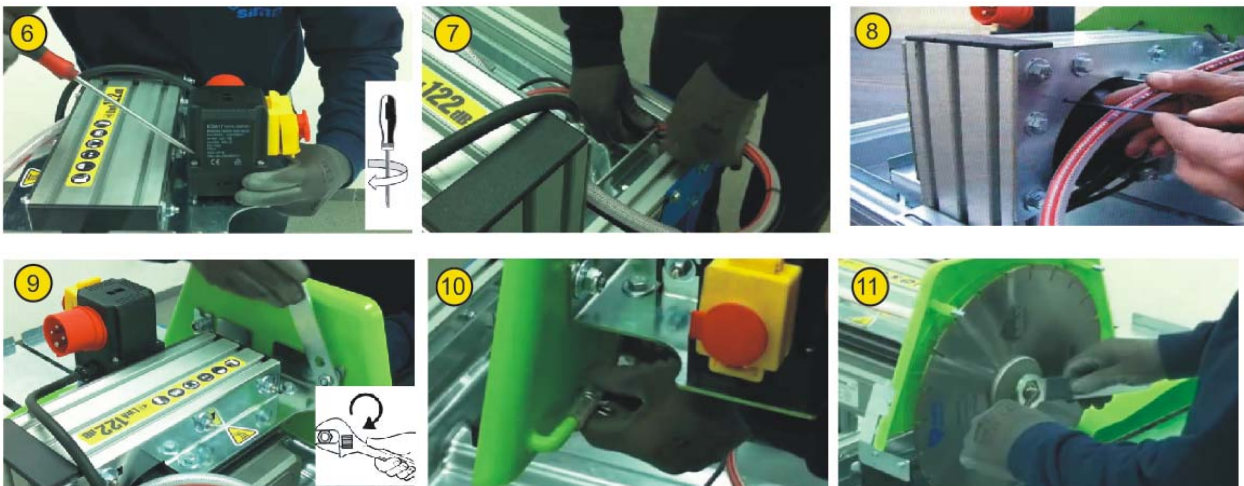
**CUTTING UNIT:** Remove the cutting unit by loosening the screws. Mount it on the side where you will find an adhesive as shows. The adhesive sets the minimum distance that must be mounted cutting unit. Mount the fixture by placing cardboard on the cart to support the cutting unit. Tighten the four screws as shown in the picture.



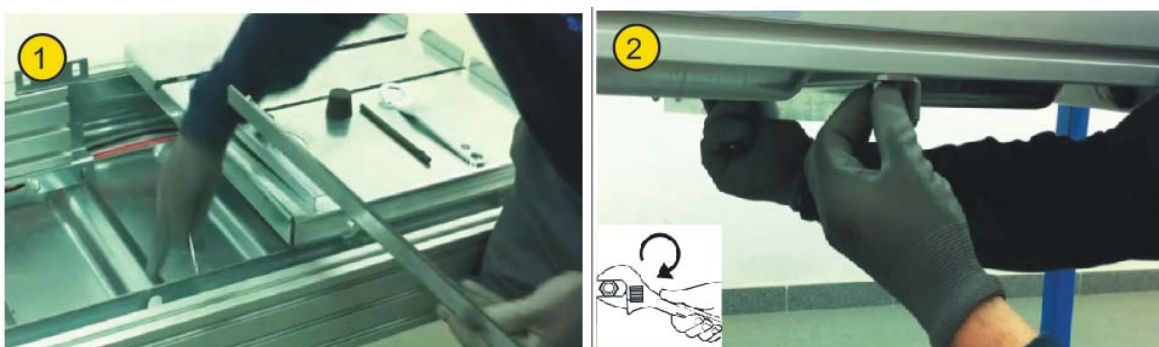
Mount accessory placing cardboard on the cart to support the cutting unit. Tighten the four screws as shown in the picture.



Then mount the switch, fit the wires through the hole in the carriage guide. Fix cables with a flange to the cutting unit, then mount the blade protection and the blade.




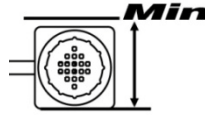
**BOTTOM REINFORCEMENT:** Remove the strengthening of the position which is positioned and mounted at the bottom of the chassis in line with the cutting unit.




### 9.2 FILLING THE TRAY WITH WATER

DAKAR MEKANO or DAKAR400 MEKANO cutters are designed to work with water-cooled diamond chains, so that a significant part of its structure is a tray designed to serve as a reservoir of cooling water which is pumped in closed circuit to the blade.

 **WARNING:** Before connecting the machine to the network to begin any cutting operation should proceed to fill the tray to the level sufficient to cover the pump completely



During cutting operations accumulate lots of dirt on the tray so the water should be changed as often as necessary to ensure the smooth operation of the pump and the perfect cooling of the blade, the tray features a drain plug that facilitates this operation.

 **WARNING:** Do not forget to wash the pump at the end of each day. To do this, unscrew the circular battery, immerse the pump in a bucket of clean water, plug the machine and circulate the water until fork clean water for cooling, disconnect the machine and screw back the cap to the pump.



### 9.3 POSITION OF THE MACHINE AND THE OPERATOR, CONNECTION AND DISCONNECTION

The machine needs to be installed in well illuminated, stable and plane surface, free from any obstacles.

Before starting-up the machine, we should have gone through all necessary safety measures (electrical connection, stability, protections, etc....) as mentioned in the previous chapters.

When installing the machine, make sure the table on which it will be placed should be a horizontal, non bland surface.

This machine is not to be used under rain and always work in good illumination conditions.

To start cutting, the operator should stand in from of the machine. In this position, the operator can easily manage the cutting head and the piece to be cut. He/she will also have easy access to the electrical plug.

Once the power supply cable is connected, the motor and the water puma start-up only by pressing the green switch button.

The machine can be stopped, simply by pressing the red switch button.



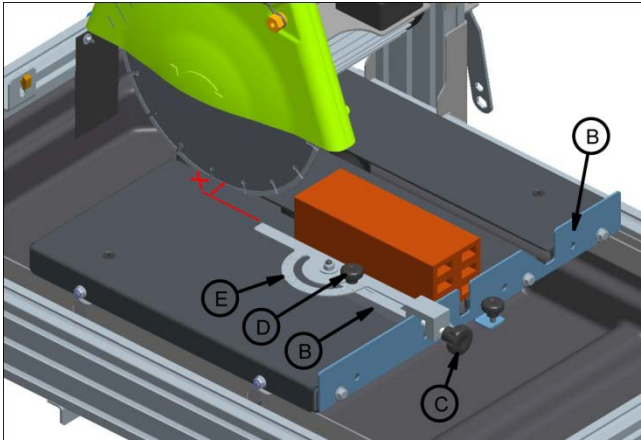
### 9.4 DJUSTABLE CUTTING RULE

Let's place the adjustable angle ruler (A, Fig.6) which is supplied with the machine on the front of the sliding cart (B, Fig.6) let it slip as wished. Then fix the ruler to the sliding cart with the nut. (C, Fig.6). Afterwards loose the knob (D, Fig.6) and turn the adjustable ruler (E, Fig.6) up to 0 positions and fix it again.

The piece to be cut is placed resting on the top front of the machine (B, Fig.6) the rule (A, Fig.6) may be placed on either side of the piece as needed, and the court will run manually pushing the machine to drive.

Start slowly and progress according to grade the depth of cut and material hardness. An excessive advance may lead to a faulty cutting or blocking the disk.

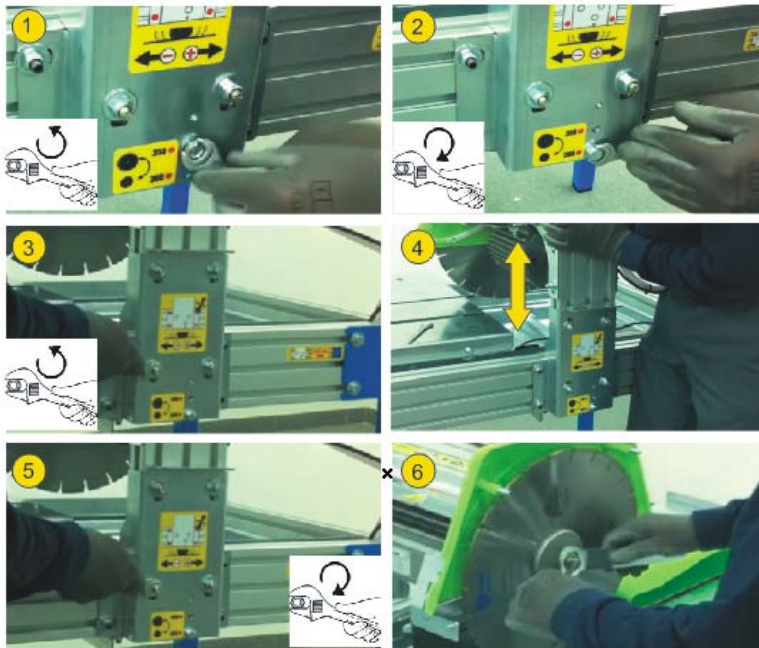
The coolant pump is started simultaneously with the engine. Before approaching the material to make sure it receives the necessary water.



### 9.5 CHANGING POSITION FROM 300 TO 350MM OR 350 TO 400MM BLADE

To use blades of diameter 300 and 350 or 350 and 400 will have to adjust the cutting unit at different heights. Proceed as follows:

- Change the top of the column position. Steps 1 and 2.
- Loosen the eight screws that secure the column. Step 3.
- Raise or lower the column as needed. Pass 4
- Tighten the eight screws. Step 5.
- Mount the new disk and its guard. Step 6.



**Warning:** Never use a 400mm blade when you are in 350 position as you will cut the sliding cart

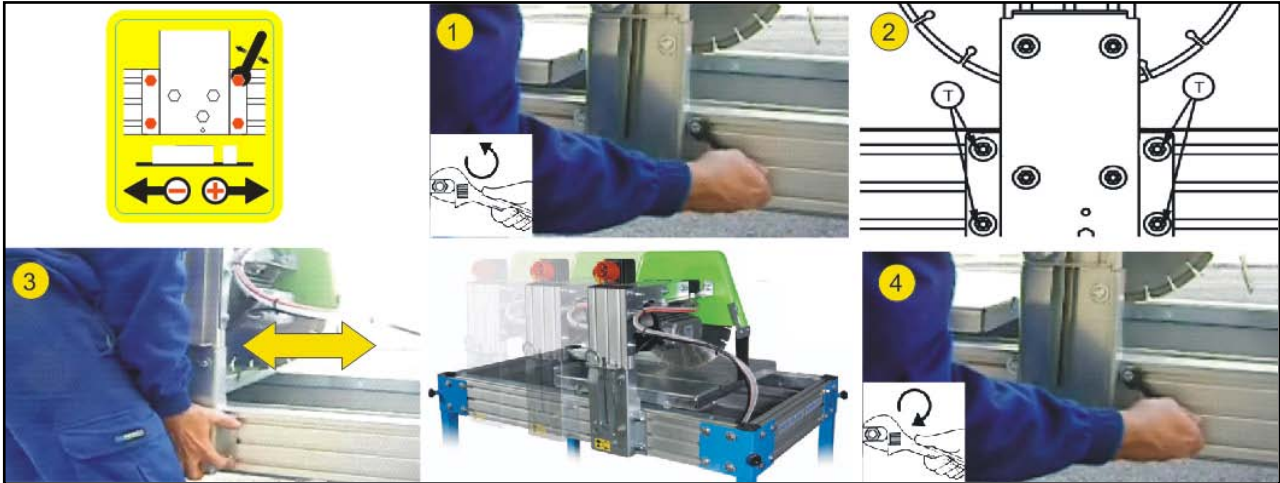


**Warning:** Never use a 350mm blade when you are in 300 position as you will cut the sliding cart.

## 9.6 CUTTING LENGTH SWITCH

To change the length of cut when is more convenient to work when the cut length is small, DAKAR MEKANO or DAKAR400 MEKANO has the ability to move the cutting unit along the side of the machine. To change the cutting length proceed as follows.

- Loosen the 4 screws as shown on the sticker.
- Move the cutting unit to the desired position and retighten the screws.



## 10. MAINTENANCE

The DAKAR MEKANO or DAKAR400 MEKANO table saws require a simple maintenance as per the following operations:

- Change the tray water and clean the machine as much as needed. The tray has a tap for this use. It is necessary to fill the tray with water until the pump is covered with water.
- Although the cooling pump has a filter cap, it may get in dirt and debris inside of the cut material to block the propeller. To prevent this, periodically run the pump in a container with clean water for several minutes. If necessary, unscrew the filter cap and clean the propeller until it turns freely.
- Remove all possible residuals of cut materials that can cling into the rolling tracks of the cutting bridge.
- Replace as soon as possible electrical cables that cause power cuts, breaking or any other disrepair.
- If the machine is not covered, wrap it with an impermeable cloth.
- At the end of each day, unplug the machine.
- Maintenance operations should be performed by people who the machine and its functioning.

**ATENCION: before performing any maintenance or cleaning operations, the electricity cable should be unplugged.**

In case you observe any anomalies or mal functioning, let a technician check the machine.

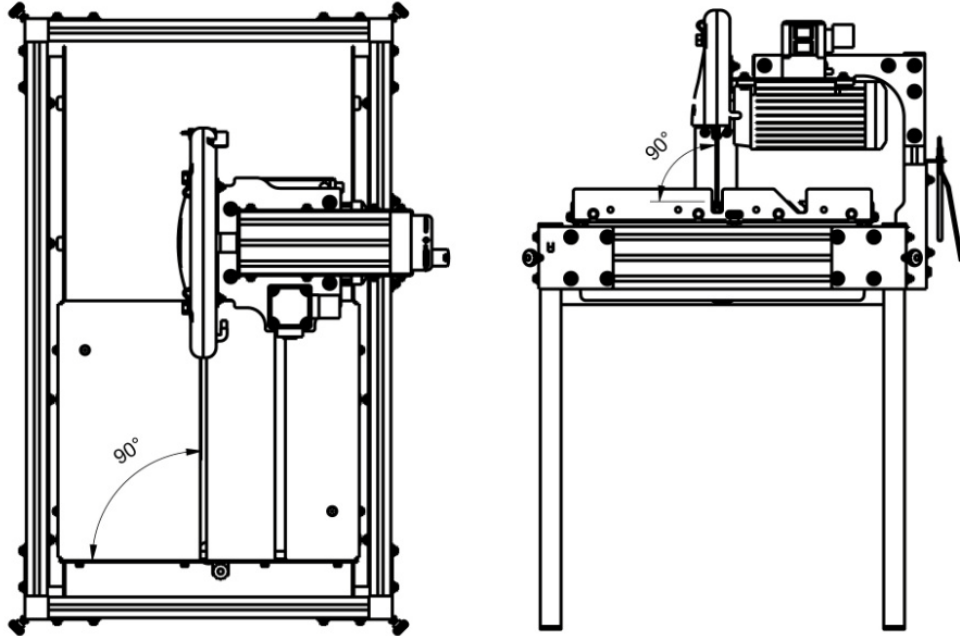
Take into account the safety recommendations mentioned in this manual.



**It is prohibited to independently make any change in some parts, components or characteristics of the machine. SIMA, S. A. shall in no case be responsible for the consequences that may derive from a breach of these recommendations.**

## 10.1 SETTING THE ANGLE OF THE BLADE

The cutter DAKAR MEKANO or DAKAR400 MEKANO model are shipped well regulated so that when mounting the blade cut at an angle of  $90^\circ$  with the car in the vertical and horizontal. If for some unforeseen blow or any other cause to be off, go to the nearest service center for repair.

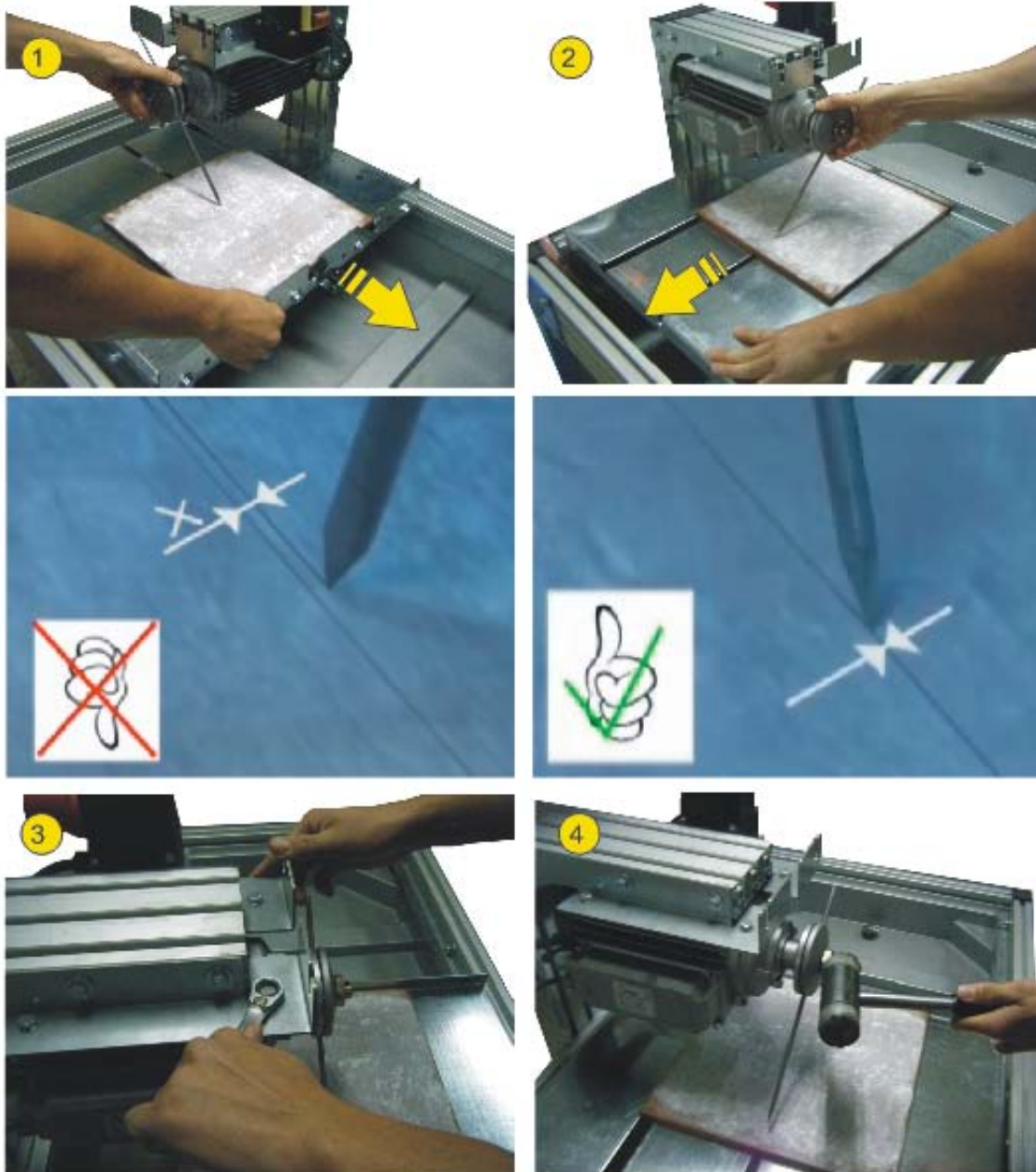




### 10.2 GUIDEWAY ALIGNMENT BLADE

To perform this operation is necessary to provide a steel rod with 4 or 5mm diameter and 300mm long approximately sharpened at one end in the form of pencil-point. Also need a piece of ceramic (tile or sandstone) and white chalk. It will proceed as follows:

- Unplug the machine from electricity and remove the blade safeguard.
- Loosen the blocking controls from both ends and with the square located on the cutting table and facing the front side of the blade, you need observe the parallelism of both.
- Place the rod between the flanges for fixing the blade and tighten the axle nut, so that the pointed end of the rod friction with the work piece in the area marked with chalk.
- Move the sliding cart so that the rod makes a straight line on the tile.
- Then turn the shaft so that the rod be on the opposite side move the tray in reverse way to the one perform before in order to draw a new line, this must match exactly with the first,
- If both lines are mismatched, to loosen the screws on the blade spindle bearings leaving them with a pinch moderate and adjust the position of this until we get the two on the chalk lines are coincident. Once achieved will turn to tighten the screws of the engine
- Replace the blade and the safeguard



## 11. SOLUTIONS TO MOST FREQUENT ANOMALIES

ANOMALY	POSSIBLE CAUSE	SOLUTION
Motor does not start up	Power supply fault	Check the power supply in the switch board. Check the position of the thermal magnet and the differential in the switch board. Make sure the extension cable is in a good state and well plugged in both ends
	Damaged switch	Substitute it
	Blocked disk	Remove obstacles preventing the disk from turning
Motor starts up very slowly and takes long to reach its revolutions	Damaged condenser. (Single phase motors)	Substitute it
Cutting power insufficient	Bluntness of the disk segments or diamond bands	Effectuate different cuts on an abrasive material (Sandstone, concrete, stone emery)
	Inappropriate disk	Use appropriate disk for material
	Motor low potency	Let the motor be checked by technical service
The cooling water does not reach the disk	Water level low in the tray	Fill in water to level
	Pump blocked	Dismount the tape filter and clean it
	Pump damaged	Substitute the pump
	The pump water tape is closed	Open the water tape
Disk premature damage	Insufficient cooling	Check the cooling
	Excessive advance	Decrease the advance
	Inappropriate disk	Use appropriate disk for material
Defective cutting	The machine is not aligned	Align
	Disk deteriorated or worn-out	Change disk
	Inappropriate disk	Use appropriate disk for material
Vibrations occurrence	Disk oscillation	Check the state of the disc and mount it correctly
	Disk subsection defect	Make sure the bridles and the motor axis are well adjusted. Tighten well the nut.
	Wrap the disk	Change the disk

12. TECNICAL CHARACTERISTICS

DATOS	DAKAR MEKANO MONOF.	DAKAR MEKANO TRIF.
Motor power (KW.)	2,2KW	3KW
Motor tension	230V~	230V~/400V~
motor R.P.M.	2800 R.P.M.	
Water pump power	50W	
Water pump tension	230V~	
Outer disk diameter (mm.)	350 mm	
Inner disk diameter (mm.)	25,4 mm	
Cutting depth (mm.)	300mm blade: 75 mm	
	350mm blade: 100 mm	
Cutting length (mm.)	350mm blade: 650 mm	
Water tank capacity (L.)	45 LITROS (minimum level)	
Net weight (Kg.)	69,2Kg	
DIMENSIONS LxWxH	1214 x 808 x 1191	

DATOS	DAKAR400 MEKANO MONOF.	DAKAR400 MEKANO TRIF.
Motor power (KW.)	2,2KW	3KW
Motor tension	230V~	230V~/400V~
motor R.P.M.	2800 R.P.M.	
Water pump power	50W	
Water pump tension	230V~	
Outer disk diameter (mm.)	400 mm	
Inner disk diameter (mm.)	25,4 mm	
Cutting depth (mm.)	350mm blade: 100 mm	
	400mm blade: 125 mm	
Cutting length (mm.)	400mm blade: 640 mm	
Water tank capacity (L.)	45 LITROS (minimum level)	
Net weight (Kg.)	71,4kg	
DIMENSIONS LxWxH	1214 x 808 x 1260	

### 13. WARRANTY

SIMA, S.A. the manufacturer of light machinery for construction possesses a net of technical services "SERVI-SIMA".

Repairs under warranty made by SERVÍ-SIMA are subject to some strict condition to guaranty a high quality and service.

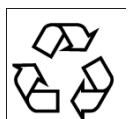
SIMA S. A. guarantees all its products against any manufacturing defect; to take into account the conditions stated in the attached document "WARRANTY CONDITIONS". The latter would cease in case of failure to comply with the established payment terms. SIMA S.A. reserves its right to bring modifications and changes to its products without prior notice.

### 14. SPARE PARTS

The spare parts for the cutting table, DAKAR MEKANO or DAKAR400 MEKANO model , manufactured by SIMA, S.A. are to be found in the spare parts plan and may be download through our website [www.simasa.com](http://www.simasa.com).

To order any spare part, please contact our alter-sales service clearly indicating the serial number of the machine, **model, manufacturing number and year of manufacturing that show on the characteristics plate.**

### 15. ENVIROMENT PROTECTION.



Raw materials have to be collected instead of throwing away residuals. Instruments, accessories, fluids and packages have to be sent into specific places for ecological reutilisation. Plastic components are marked for selective recycling.



**R.A.E.E. Residuals arising of electrical and electronic instruments have to be stored into specific places for selective collection.**

### 16. DECLARATION OF NOISES.

**The acoustic level emitted by the MACHINE:**

DAKAR MEKANO or DAKAR400 MEKANO MONF. LWA (dBa) 122

DAKAR MEKANO or DAKAR400 MEKANO TRIF. LWA (dBa) 122

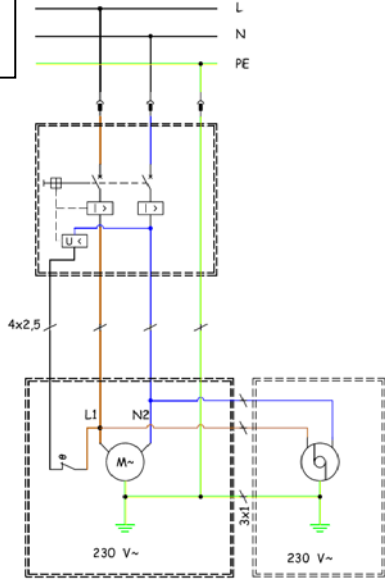
### 17. DECLARATION ON MECHANICAL VIBRATIONS

**The level of vibrations transmitted to the hand-arm:**

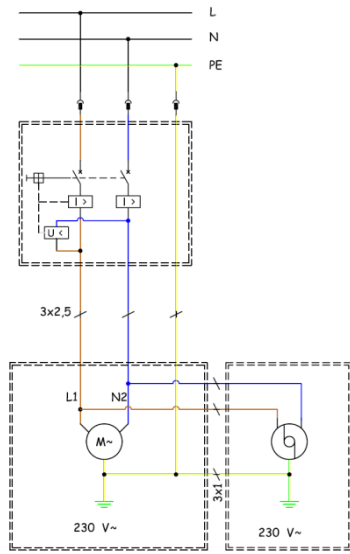
MODEL	LEFT HAND m/ s <sup>2</sup>	RIGHT HAND m/ s <sup>2</sup>
DAKAR MEKANO or DAKAR400 MEKANO MONF.	5,71220387313	4,71851454008
DAKAR MEKANO or DAKAR400 MEKANO TRIF.	5,71220387313	4,71851454008

18. ELECTRICAL SCHEMES .

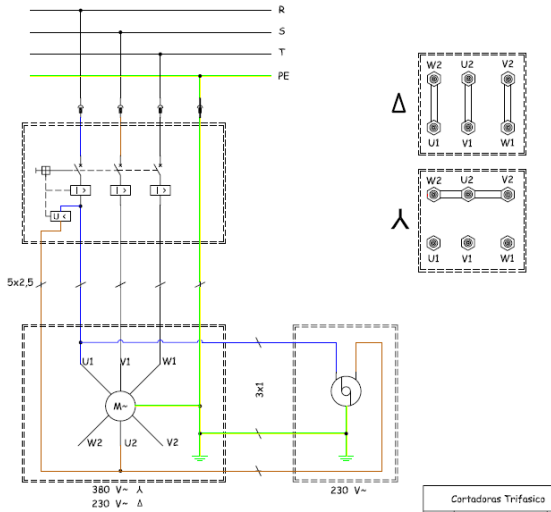
2P+T+ (Sonda térmica)  
 2P+T+ (Thermal probe)  
 2P+T+ (Sonde thermique)



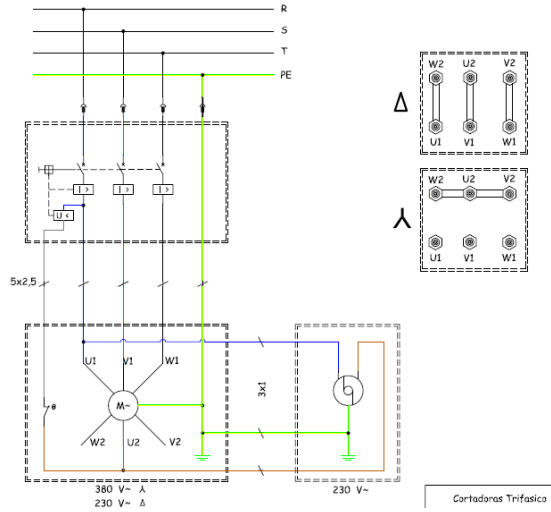
2P+T



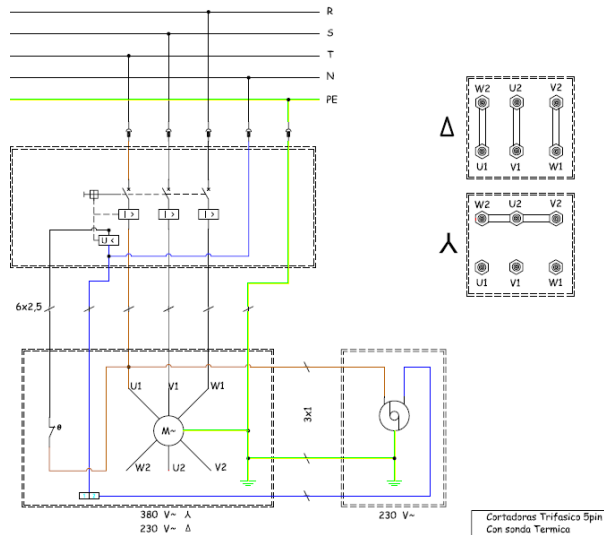
3P+T+ (Sonda térmica)  
 3P+T+ (Thermal probe)  
 3P+T+ (Sonde thermique)



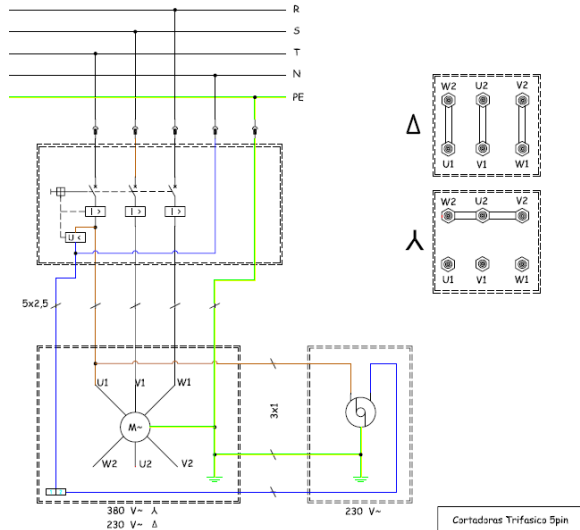
3P+T



3P+N+T+ (Sonda térmica)  
 3P+N+T+ (Thermal probe)  
 3P+N+T+ (Sonde thermique)



3P+N+T





**WARRANTY CERTIFICATE**

**AFTER-SALES SERVICE**

**END USER FORM**

**MACHINE DETAILS**

NUMBER PLATE

**CLIENT DETAILS**

NAME	
ADDRESS	
POSTAL CODE AND CITY	
PROVINCE/COUNTRY	
TEL.:	Fax:
E-mail	
DATE OF PURCHASE	

**Signature and stamp of the selling party**

**Client signature**

**WARRANTY CONDITIONS**

- 1.) SIMA, S.A. fully guarantees all its products against defects in design, taking responsibility in the repairs or the faulty equipment for a period of ONE year from the original date of purchase. The date of purchase must appear on the warranty voucher enclosed.
- 2.) The warranty covers exclusively labor, repair and substitution of the faulty parts, the model and serial number of which must show on the warranty certificate.
- 3.) Transport, stay and food expenses before arriving to SIMA S.A., will be covered by the client.
- 4.) The warranty does not cover any damage caused by the normal wear, undue usage, overloading, inadequate installation or bad conservation of the machine.
- 5.) All repairs under WARRANTY will solely be effectuated by SIMA, S.A. or by its authorized dealers or repair centers.
- 6.) This Guarantee will be invalid in the following cases:
  - a) Any Warranty certificate manipulation or modification
  - b) Repairs, modifications or substitution of any part of the machine by unauthorized parties by SIMA S.A technical department.
  - c) The non-approved installation of devices by SIMA S.A technical department.
- 7.) SIMA is not responsible for any damages caused by the failure of the product. This includes, but not limited to, annoyances, transport expenses, telephone calls and loss of personal goods or commercial benefits, as well as the loss of pay or salary.
- 8.) Faulty thermal or electrical motors under warranty have to be sent to SIMA S.A or its authorized technical service in the country.
- 9.) To be benefit from the warranty, the warranty certificate must be at SIMA S.A premises within 30 days from the purchasing date. To claim the warranty, the purchase invoice has to be attached stamped by the dealer including the serial number of the machine.



SOCIEDAD INDUSTRIAL DE MAQUINARIA ANDALUZA, S.A.  
 POL. IND. JUNCARIL, C/ALBUÑOL, PARC. 250  
 18220 ALBOLOTE (GRANADA)  
 Tel.: 34 - 958-49 04 10 – Fax: 34 - 958-46 66 45  
 MANUFACTURER OF LIGHT MACHINERY FOR CONSTRUCTION





**WARRANTY CERTIFICATE**

**AFTER-SALES SERVICE**

**FORM TO RETURN TO MANUFACTURER**

**DATOS MÁQUINA**

NUMBER PLATE

**DATOS COMPRADOR**

NAME \_\_\_\_\_

ADDRESS \_\_\_\_\_

POSTAL CODE AND CITY \_\_\_\_\_

PROVINCE/COUNTRY \_\_\_\_\_

TEL.: \_\_\_\_\_ Fax: \_\_\_\_\_

E-mail: \_\_\_\_\_

DATE OF PURCHASE \_\_\_\_\_

**Signature and stamp of the selling party**

**Client signature**

**WARRANTY CONDITIONS**

- 1.) SIMA, S.A. fully guarantees all its products against defects in design, taking responsibility in the repairs or the faulty equipment for a period of ONE year from the original date of purchase. The date of purchase must appear on the warranty voucher enclosed.
- 2.) The warranty covers exclusively labor, repair and substitution of the faulty parts, the model and serial number of which must show on the warranty certificate.
- 3.) Transport, stay and food expenses before arriving to SIMA S.A., will be covered by the client.
- 4.) The warranty does not cover any damage caused by the normal wear, undue usage, overloading, inadequate installation or bad conservation of the machine.
- 5.) All repairs under WARRANTY will solely be effectuated by SIMA, S.A. or by its authorized dealers or repair centers.
- 6.) This Guarantee will be invalid in the following cases:
  - a) Any Warranty certificate manipulation or modification
  - b) Repairs, modifications or substitution of any part of the machine by unauthorized parties by SIMA S.A technical department.
  - c) The non-approved installation of devices by SIMA S.A technical department.
- 7.) SIMA is not responsible for any damages caused by the failure of the product. This includes, but not limited to, annoyances, transport expenses, telephone calls and loss of personal goods or commercial benefits, as well as the loss of pay or salary.
- 8.) Faulty thermal or electrical motors under warranty have to be sent to SIMA S.A or its authorized technical service in the country.
- 9.) To be benefit from the warranty, the warranty certificate must be at SIMA S.A premises within 30 days from the purchasing date. To claim the warranty, the purchase invoice has to be attached stamped by the dealer including the serial number of the machine.









SOCIEDAD INDUSTRIAL DE MAQUINARIA ANDALUZA, S.A.

POL. IND. JUNCARIL, C/ALBUÑOL, PARC. 250

18220 ALBOLOTE (GRANADA)

TEL.: 34 - 958-49 04 10 – Fax: 34 - 958-46 66 45

MANUFACTURER OF LIGHT MACHINERY FOR CONSTRUCTION

SPAIN