

## INDEX

<b>1. GENERAL INFORMATION.....</b>	<b>4</b>
<b>2. GENERAL DISCRIPTION .....</b>	<b>4</b>
<b>3. TRANSPORT .....</b>	<b>4</b>
<b>4. ASSEMBLING INSTRUCTIONS .....</b>	<b>4</b>
4.1 MOUNTING THE BLADES .....	4
4.2 MAINTENANCE, INSPECTION AND CONTROL .....	5
<b>5. USING INSTRUCTIONS.....</b>	<b>5</b>
<b>6. SAFETY RECOMMENDATIONS .....</b>	<b>6</b>
<b>7. SOLUTIONS TO MOST FREQUENT ANOMALIES .....</b>	<b>6</b>
<b>8. TECHNICAL CHARACTERISTICS.....</b>	<b>6</b>
<b>9. WARRANTY .....</b>	<b>7</b>
<b>10. SPARE PARTS.....</b>	<b>7</b>
<b>11. ENVIRONMENT PROTECTION .....</b>	<b>7</b>
<b>WARRANTY CERTIFICATE .....</b>	<b>8</b>

## 1. GENERAL INFORMATION

**WARNING: Please read and understand perfectly the present instruction before using the machine.**

SIMA S.A. thanks you for your trust in our products and for purchasing the MANUAL SHEAR.

This manual provides you with the necessary instructions to start, use, maintain and in your case, repair of the present machine. All aspects as far as the safety and health of the users is concerned have been stated. Respecting all instructions and recommendations guarantees safety and low maintenance. As such, reading this manual carefully is compulsory for any person responsible for the use, maintenance or repair of this machine.

## 2. GENERAL DISCRIPTION

The manual shear, model **C6/..**, have been designed and manufactured to cut reinforced of flat steel bars for construction, using exchangeable blades that are mounted onto cutting jaws.

**Any other use of this machine is considered inadequate and can be dangerous. Thus, this is utterly prohibited.**

- The manual shear is designed to be fixed to the work table, through its four elements of fixing incorporated in the frame.
- Advancing the material to cut is done manually sliding the bar through the opening between the blades.
- The cutting is done through exerting a force on the arm of the handle

## 3. TRANSPORT

For a safe transport of the machine, please follow the following instructions:

Moving the shears in the work site must be done through manual pallet-car or forklifts to avoid accidents.

## 4. ASSEMBLING INSTRUCTIONS

The shear is completely mounted and ready to us on the day of purchase.

### 4.1 MOUNTING THE BLADES

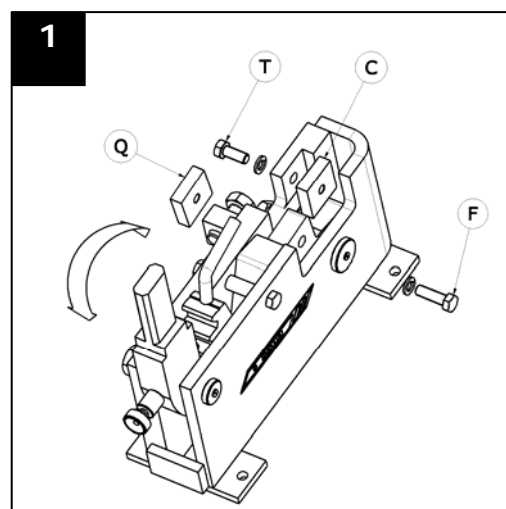
If one of the blades gets blunt due to frequent use, replace it as follows:

#### MOBILE BLADE

- 1 Raise the arm of the cogwheel handle as indicates the arrow in **Fig.1**.
- 2 Remove the screw **F**, **Fig. 1** rotate the blade **Q** for a new cut, or replace with a new one if necessary and proceed in the reverse.

#### FIXED BLADE

- 1 Raise the arm of the cogwheel handle as indicates the arrow in **Fig.1**, to free the fixed blade.
- 3 Remove the screw **T**, **Fig. 1** rotate the blade **C** for a new cut, or replace with a new one if necessary and proceed in the reverse.



## 4.2 MAINTENANCE, INSPECTION AND CONTROL

To keep the shear in good conditions, you need to control periodically the following points:

- 1 After each day of work, check the condition of the shear and replace them if blunt.
- 2 Lubricate after **each 5 days** of work the cogwheel rotation spindles and the mandible
- 3 Grease **each 2 months of use** the mandible cogs and cogwheel.

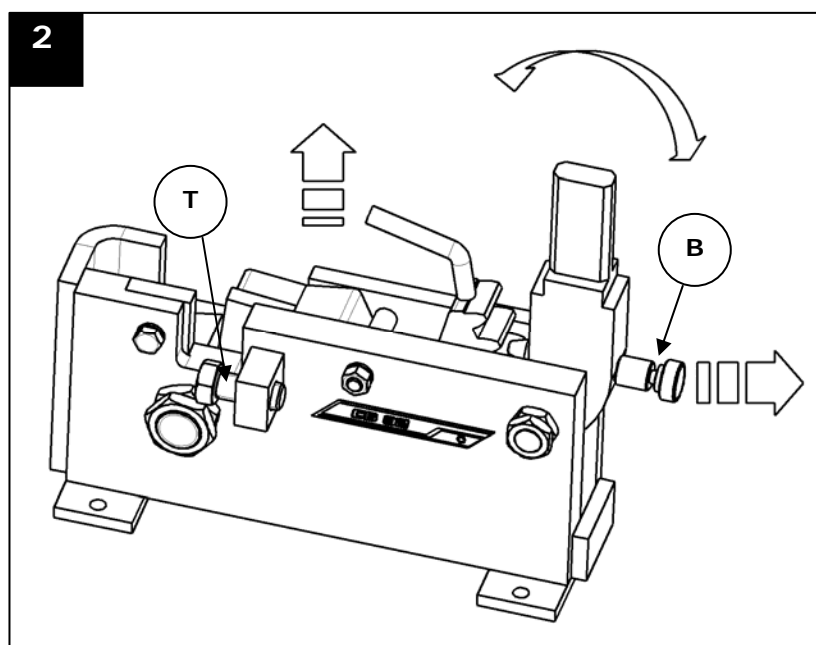
## 5. USING INSTRUCTIONS

The manual shears have been designed and manufactured to cut flat and reinforced steel bars for construction. Therefore, it is expressly prohibited. Adding any tool or accessory, or bringing any modification to the machine without written authorization from the manufacturer is considered inappropriate and can be dangerous.

### STEPS TO FOLLOW WHEN PERFORMING A CUTTING

- 1 Fix the shear on a firm surface with the special drill for this use, making sure the machine remains stable
- 2 mount the handle supplied with the machine and the cogwheel stem.
- 3 Place the bar to cut between the blades and push the lever until the cut is performed. The curved form of the lever together with the design of the machine allow cutting in two attacks with only changing the position of the lever.

The models **C6/28** and **C6/32** have a positioning bolt in the cogwheel stem B, Fig.2 that allows regulating the opening between the blades, according to the thickness of the material to be cut. To avoid the rods crossing in the blades at the time of court, the shear has an adjustable screw for the bar resting. **T, Fig. 2**



## 6. SAFETY RECOMMENDATIONS

- Before using the manual shear, read carefully the instructions manual and make sure to comply with the safety norms.
- The manual shears are only to be operated by authorized people that have been trained on their functioning.
- Use always the adequate Individual Protection Equipment (IPE) for each job.
- Make sure the manual shear in a perfect technical state and working order.
- Do not operate the manual shear if it is not firmly fixed to a safe surface.
- Check there is nobody in the machine working ratio
- When you need to move the machine, do it in a safe manner with the necessary means in function of its weight.
- Control the joints, bolts, nuts, wildings, corrosion, fissures etc.
- Never use the shear for what it has not been designed for.

**WARNING:** You are to follow all safety recommendations mentioned in the present user manual and comply with all labour risks prevention norms in every location.

SIMA, S.A. is not responsible for the consequences possibly generated but the inadequate use of the manual shear.

## 7. SOLUTIONS TO MOST FREQUENT ANOMALIES

ANOMALY	POSSIBL CAUSE	SOLUTION
Does not cut	Blades blunt	Turn the blade for a new set of cuttings and replace it if necessary
	Excessive resistance to cutting	Correct anew the distance between the blades
Premature wear of the bolts	Fault of maintenance	Periodically grease the bolts

## 8. TECHNICAL CHARACTERISTICS

DETAILS	C6/22.	C6/28.	C6/32.
NET WEIGHT Kg.	19	40	49
DIMENSIONS L x A x H mm.	300x120x250	470x150x350	470x160x360
MAXIMAL CUTTING Ø mm	22 flat	28 flat	32 flat

## 9. WARRANTY

SIMA, S.A. the manufacturer of light machinery for construction possesses a net of technical services "SERVI-SIMA".

Repairs under warranty made by SERVI-SIMA are subject to some strict condition to guaranty a high quality and service.

SIMA S. A. guarantees all its products against any manufacturing defect; to take into account the conditions stated in the attached document "WARRANTY CONDITIONS". The latter would cease in case of failure to comply with the established payment terms. SIMA S.A. reserves its right to bring modifications and changes to its products without prior notice.

## 10. SPARE PARTS

The spare parts for the manual shear **C/...**, manufactured by SIMA, S.A. are to be found in the spare parts plan, attached to this manual.

To order any spare part, please contact our alter-sales service clearly indicating the serial number of the machine, **model, manufacturing number and year of manufacturing that show on the characteristics plate**.

## 11. ENVIRONMENT PROTECTION



Raw materials have to be collected instead of throwing away residuals. Instruments, accessories, fluids and packages have to be sent into specific places for ecological reutilisation. Plastic components are marked for selective recycling.

**WARRANTY CERTIFICATE****AFTER-SALES SERVICE****END USER FORM****MACHINE DETAILS**

NUMBER PLATE
--------------

**CLIENT DETAILS**

NAME

ADDRESS

POSTAL CODE AND CITY

PROVINCE/COUNTRY

TEL.:

Fax:

E-mail

DATE OF PURCHASE

**Signature and stamp of the selling party****Client signature****WARRANTY CONDITIONS**

- 1.) SIMA, S.A. fully guarantees all its products against defects in design, taking responsibility in the repairs or the faulty equipment for a period of ONE year from the original date of purchase. The date of purchase must appear on the warranty voucher enclosed.
- 2.) The warranty covers exclusively labour, repair and substitution of the faulty parts, the model and serial number of which must show on the warranty certificate.
- 3.) Transport, stay and food expenses before arriving to SIMA S.A., will be covered by the client.
- 4.) The warranty does not cover any damage caused by the normal wear, undue usage, overloading, inadequate installation or bad conservation of the machine.
- 5.) All repairs under WARRANTY will solely be effectuated by SIMA, S.A. or by its authorised dealers or repair centres.
- 6.) This Guarantee will be invalid in the following cases:
  - a) Any Warranty certificate manipulation or modification
  - b) Repairs, modifications or substitution of any part of the machine by unauthorized parties by SIMA S.A technical department.
  - c) The non-approved installation of devices by SIMA S.A technical department.
- 7.) SIMA is not responsible for any damages caused by the failure of the product. This includes, but not limited to, annoyances, transport expenses, telephone calls and loss of personal goods or commercial benefits, as well as the loss of pay or salary.
- 8.) Faulty thermal or electrical motors under warranty have to be sent to SIMA S.A or its authorized technical service in the country.
- 9.) To be benefit from the warranty, the warranty certificate must be at SIMA S.A premises within 30 days from the purchasing date. To claim the warranty, the purchase invoice has to be attached stamped by the dealer including the serial number of the machine.



SOCIEDAD INDUSTRIAL DE MAQUINARIA ANDALUZA, S.A.

POL. IND. JUNCARIL, C/ALBUÑOL, PARC. 250

18220 ALBOLOTE (GRANADA)

TEL: 34 - 958-49 04 10 – Fax: 34 - 958-46 66 45

MANUFACTURER OF LIGHT MACHINERY FOR CONSTRUCTION

SPAIN

**WARRANTY CERTIFICATE****AFTER-SALES SERVICE****FORM TO RETURN TO MANUFACTURER****DATOS MÁQUINA**

NUMBER PLATE
--------------

**DATOS COMPRADOR**

NAME

ADDRESS

POSTAL CODE AND CITY

PROVINCE/COUNTRY

TEL.:

Fax:

E-mail:

DATE OF PURCHASE

**Signature and stamp of the selling party****Client signature****WARRANTY CONDITIONS**

1.) SIMA, S.A. fully guarantees all its products against defects in design, taking responsibility in the repairs or the faulty equipment for a period of ONE year from the original date of purchase. The date of purchase must appear on the warranty voucher enclosed.

2.) The warranty covers exclusively labour, repair and substitution of the faulty parts, the model and serial number of which must show on the warranty certificate.

3.) Transport, stay and food expenses before arriving to SIMA S.A., will be covered by the client.

4.) The warranty does not cover any damage caused by the normal wear, undue usage, overloading, inadequate installation or bad conservation of the machine.

5.) All repairs under WARRANTY will solely be effectuated by SIMA, S.A. or by its authorised dealers or repair centres.

6.) This Guarantee will be invalid in the following cases:

- a) Any Warranty certificate manipulation or modification
- b) Repairs, modifications or substitution of any part of the machine by unauthorized parties by SIMA S.A technical department.
- c) The non-approved installation of devices by SIMA S.A technical department.

7.) SIMA is not responsible for any damages caused by the failure of the product. This includes, but not limited to, annoyances, transport expenses, telephone calls and loss of personal goods or commercial benefits, as well as the loss of pay or salary.

8.) Faulty thermal or electrical motors under warranty have to be sent to SIMA S.A or its authorized technical service in the country.

9.) To be benefit from the warranty, the warranty certificate must be at SIMA S.A premises within 30 days from the purchasing date. To claim the warranty, the purchase invoice has to be attached stamped by the dealer including the serial number of the machine.



SOCIEDAD INDUSTRIAL DE MAQUINARIA ANDALUZA, S.A.

POL. IND. JUNCARIL, C/ALBUÑOL, PARC. 250

18220 ALBOLOTE (GRANADA)

TEL: 34 - 958-49 04 10 – Fax: 34 - 958-46 66 45

MANUFACTURER OF LIGHT MACHINERY FOR CONSTRUCTION

SPAIN

